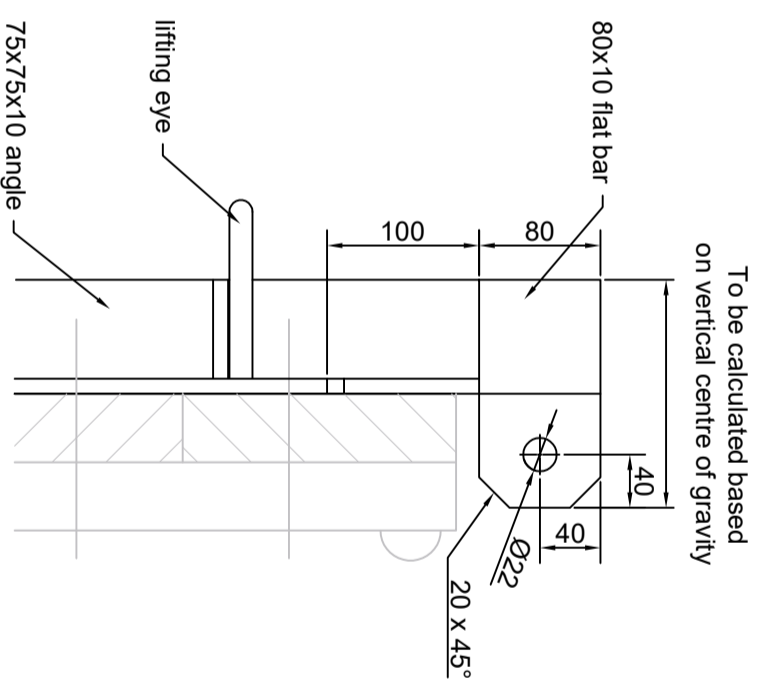
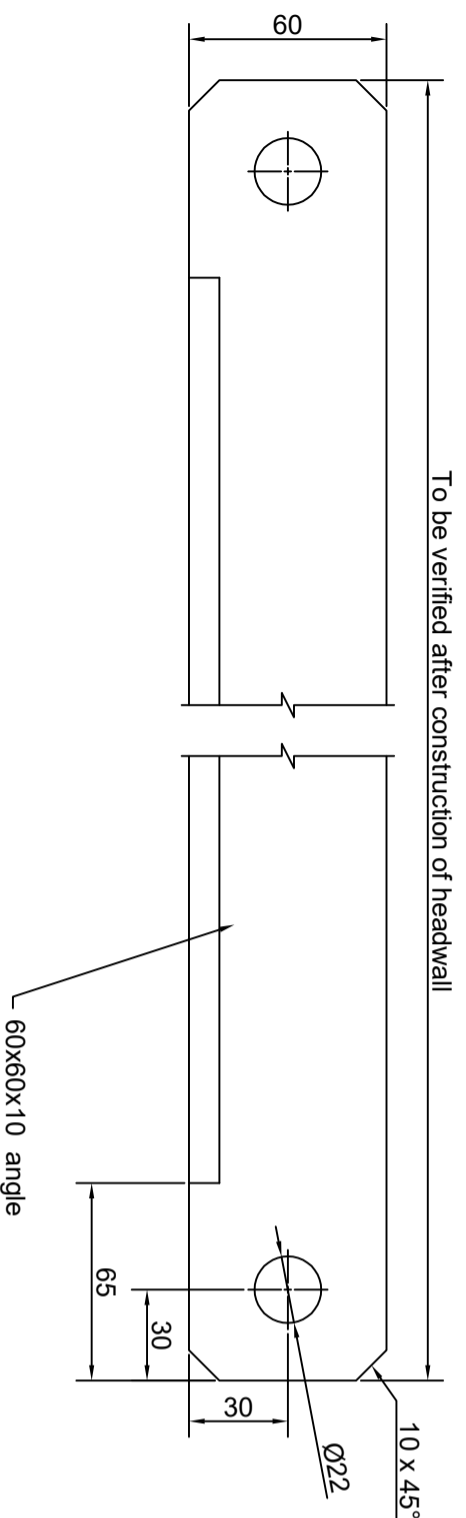


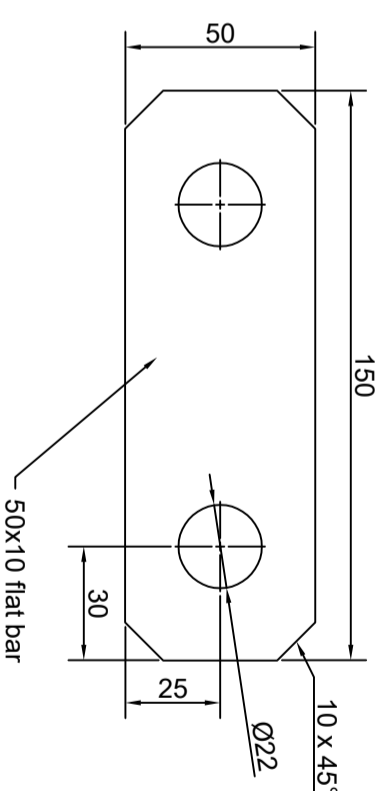
4 Hanger Bar Mount



5 Section



6 Hanger Bar



7 Hanger Bar Link

- NOTES**
1. All dimensions in millimeters unless otherwise specified.
 2. Contractor to confirm dimensions prior to fabrication.
 3. A suitable electrode with a minimum tensile strength of 410 MPa to be used for all welding. Sealing welds are to be made on all unwelded seams.
 4. Remove all burrs, sharp edges and weld slag and spatter when fabrication is complete and prior to galvanising.
 5. All fabricated sheet components are to be hot dip galvanised.
 6. All bolts, washers and nuts to be 304 Stainless Steel.
 7. The hanger bar length is to be verified after completion of the headwall construction.
 8. **Component Specifications:**
Winch: Allquip BHW-2600 S/S with auto brake.
Chain: 6mm regular link galvanised.
Pulley: S/S open pulley with pin.
Rubber Seal: Skellerup flood gate rubber seal Code PKA069
 - 9.

Rev	Description	Approved	Date
0	Construction Issue	A Morphet	29/11/19



Standard Drawings
Flapgate
Lifting Mechanism

Date	Drawn	Checked	REV
29 November 2019	A McCaughan	M Farrell	0
Drawing Number	WRC - 1693	S.2	0
Scale:	As indicated @ A3		