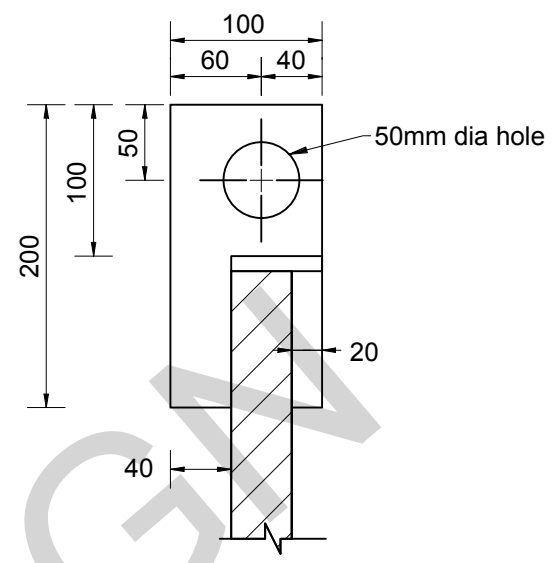
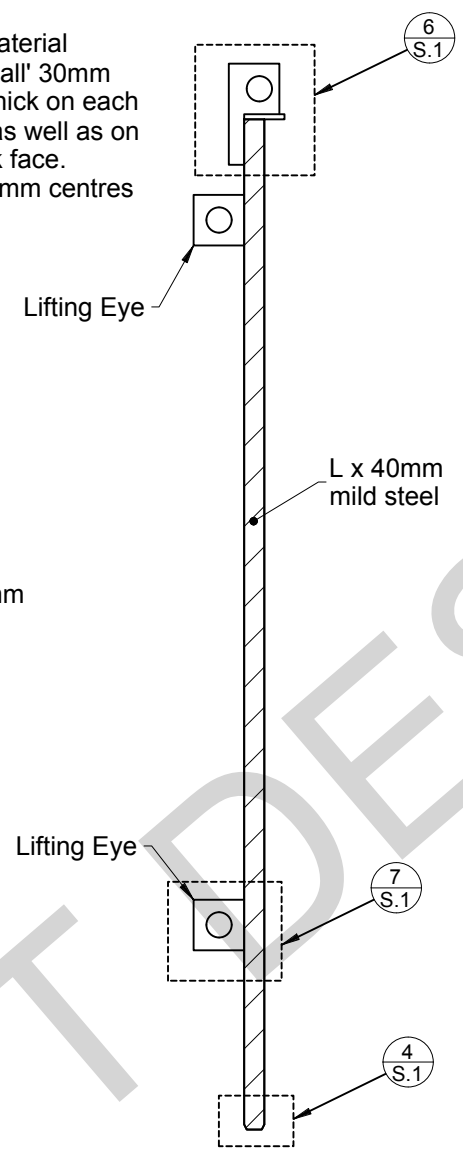
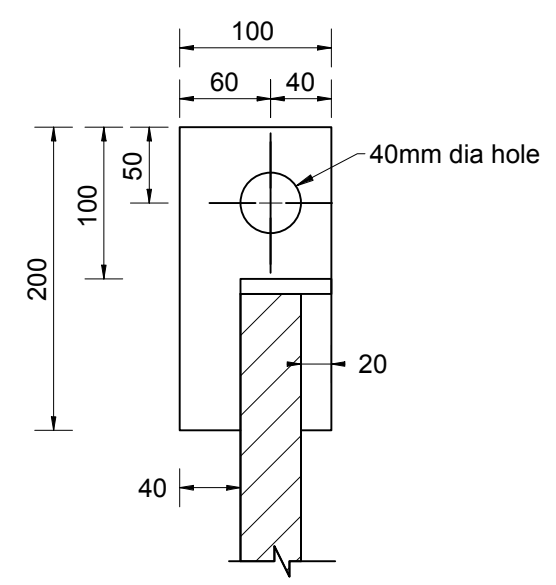


Low friction material (refer note) shall be 30mm wide 9.5mm thick on each edge of gate as well as on front and back face. Fixings at 170mm centres



5 Section  
1:5



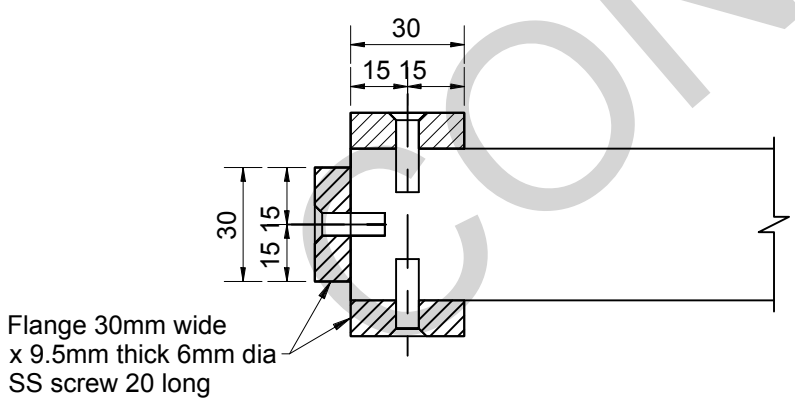
6 Detail  
1:5

NOTES

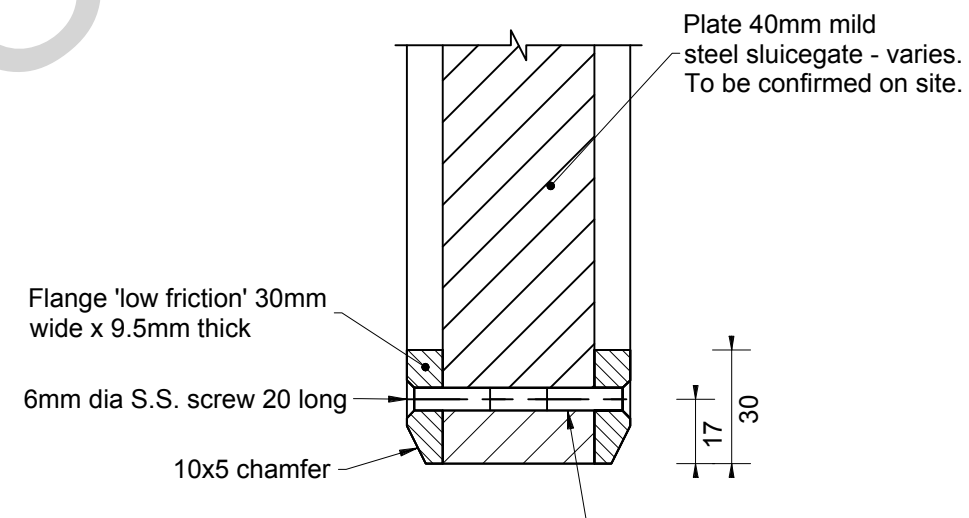
- All dimensions are in millimetres unless otherwise shown.
- Weld symbols:  
 Continuous 5mm leg fillet weld all round joint
- A suitable mild electrode is to be used for welding the mild steel.  
Minimum F = 410MPa
- All parts of a joint not sealed with a specified weld shall be sealed with a continuous run of nominal size weld.
- All necessary care shall be taken during fabrication and galvanising to avoid distortion.
- Remove all burrs, sharp edges, weld slag and spatter after fabrication is complete and prior to galvanising.
- Following galvanising the gate shall be "sweet" blasted and painted with two pot epoxy paint. Refer painting specification.
- The sluiceway without the 'Low Friction' strips is to be hot dip galvanised, blasted and 2 pot epoxy applied. After galvanising and painting, the 'Low Friction' strips are to be fixed in position by the 6mm dia stainless steel screws. Screw heads are to be countersunk to below the 'Low Friction' surface by at least 2mm.
- Prevention of damage to corrosion resistant coatings: Particular care must be taken at all times to avoid damage to galvanised and painted surfaces. Timber packing etc. is to be used to assist in achieving this.
- Sluiceway Weight  
Approx. gate weight = TBC
- Holes for bolts and pins  
Maximum dimensions are specified on this drawing for bolt and pin hole dimensions.
- Low Friction material shall be UHMWPE

1 Sluice Gate Elevation  
1:15

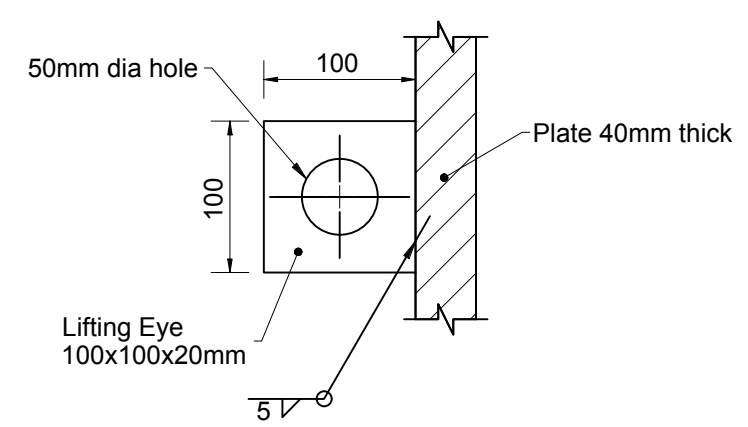
2 CL Section  
1:15



3 Section  
1:2



4 Detail  
1:2



7 Detail  
1:5

0	Construction Issue	A Morphet	29/11/19
Rev	Description	Approved	Date

Concept Design  
Sluice Gate  
(Low Head)

Date: 29 November 2019	Drawn: A McCaughan
Checked: M Farrell	
Drawing Number WRC-1694	REV S.1
Scale: As indicated	@ A3