

WAIKATO PGF LIDAR PROJECT

Newsletter

Project Update

The project team are excited that the Waikato aerial survey operations are finally about to commence.

COVID 19 border restrictions have given the project team some interesting challenges to overcome in recent months. The WLASS team in partnership with the equivalent team from Hawkes Bay successfully applied to NZ Immigration for critical worker border exemption. This has allowed the iXblue Site Team Leader and the Aero Logistics pilots to bring planes to NZ, go through the mandatory 14 day quarantine and commence operations.

At the same time the iXblue NZ based team have transferred their survey and hydrographic skills to train as LiDAR sensor operators. This has given us a team of NZ based sensor operators and has removed the challenges of bringing the US based operators back into the country.

You may remember that iXblue had to make a hasty exit from the Hawkes Bay project when NZ went into COVID 19 lockdown earlier this year. The first plane is now back in Hawkes Bay and making good progress through their aerial survey work.

The second plane is expected in NZ before Christmas and will rapidly be deployed to finish Hawkes Bay or start the Waikato aerial survey. As always, we are at the mercy of the weather so we have our fingers crossed for a lot of great weather in the coming months.

We are also pleased to report that the Waikato ground survey operation started on 30 November and the team have completed 23% of the fieldwork in the following 2 weeks.

Merry Christmas

Rolf Boswell (WLASS), Bryan Clements (WRC), Matt James (iXblue), Stuart Paisley (iXblue)

Ground Survey

Although the aerial survey operation tends to get much of the focus and attention, we have also started a significant ground survey programme. The project will include two types of ground survey:

- 1) 121 Ground Control Points
- 2) 190 Check sites

Check out the further explanation below including a region plan of the ground survey locations.

Key Project Milestones

- November 2020: Mobilisation of ground survey (achieved)
- December 2020: Mobilisation of aerial survey (reforecast)
- February 2021: Completion of ground survey
- May 2021: Completion of aerial survey
- October 2022: Delivery of full data set

CoFundors

We are pleased to confirm that we have support from five organisations who have generously agreed to support this regional project.

- Environmental Research Institute (Waikato University)
- Earthquake Commission
- Mercury NZ Limited
- Waikato River Cleanup Trust
- WEL Networks
- Lincoln Agritech

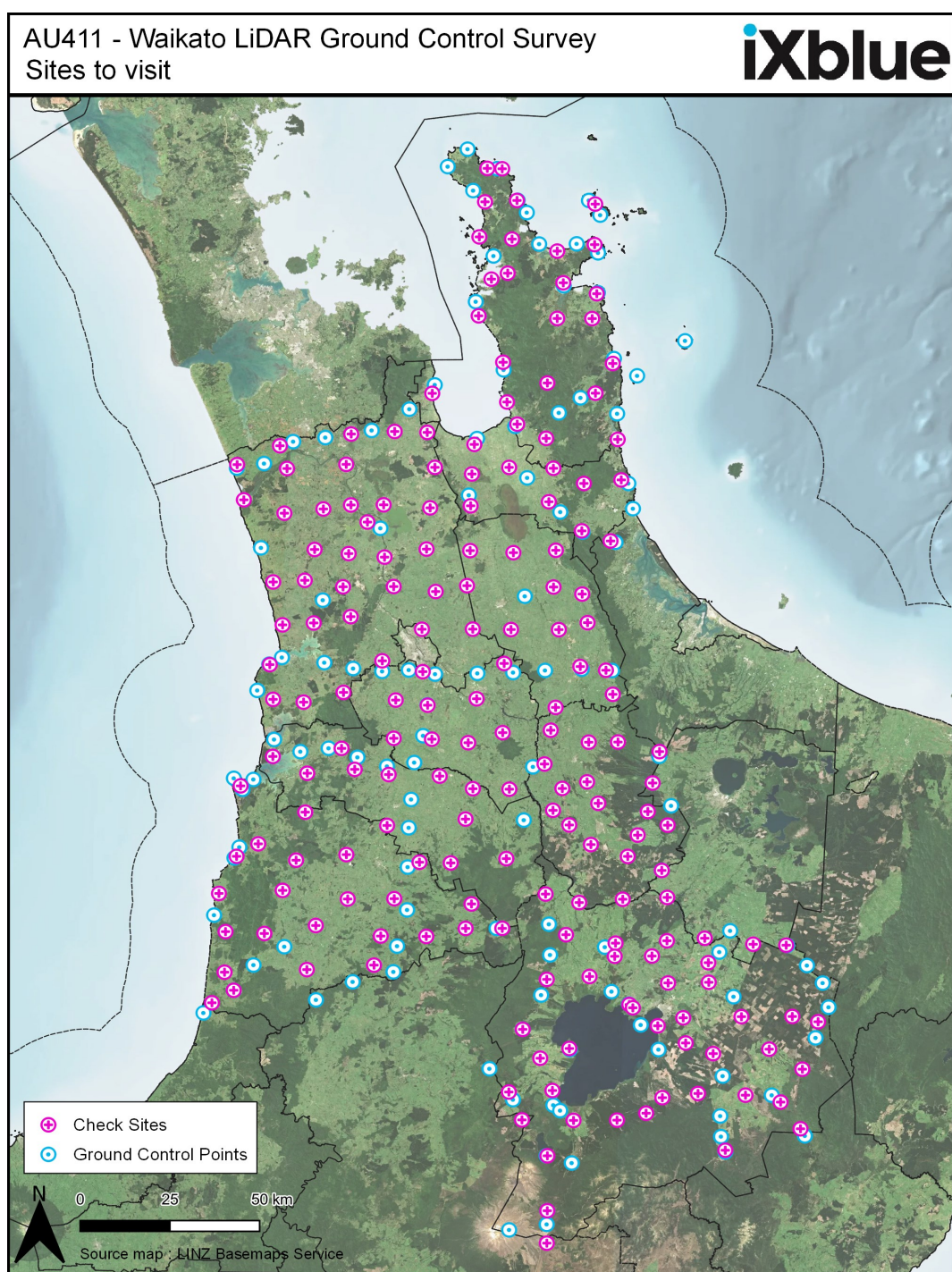
We appreciate their support.

Ground Survey Control Point Locations (see image below)

This image illustrates the 311 (total) sites to visit in the project area.

The pink points indicate the Check Sites, which are 9 point arrays, conducted over flat terrain that are used to determine the final accuracy of the LiDAR survey once production has reached the stage where final outputs can be delivered.

The blue points indicate the Ground Control Points, which are more defined points with respect to real world features. These are used to align and check the LiDAR survey with the required geodetic and vertical datum of the project.



How can I found out more?

Email us on info@waikatolass.co.nz

OR go to the website [HERE](#)

Feedback?

We would love to receive your feedback about this newsletter. You can do this by emailing us at info@waikatolass.co.nz