

### TECHNICAL SPECIFICATION

#### DESIGN CONDITIONS

Design Wind Speed	N/A	m/s
Max Luminaire Sail Area	N/A	m <sup>2</sup> /pc
Max Luminaire Weight	N/A	Kg
Max CCTV Camera Sail Area	N/A	m <sup>2</sup> /pc
Max CCTV Camera Weight	N/A	Kg

#### STANDARDS

Pole Design	AS 4676/AS 1170.2 Section4/NZS 4203
Material	EN 12767 Class 0/ BS 4360/BS EN 10025
Welding (Electric Arc Welding)	AS 1554
Galvanising	AS/NZS 4680

#### TESTING PROCEDURES

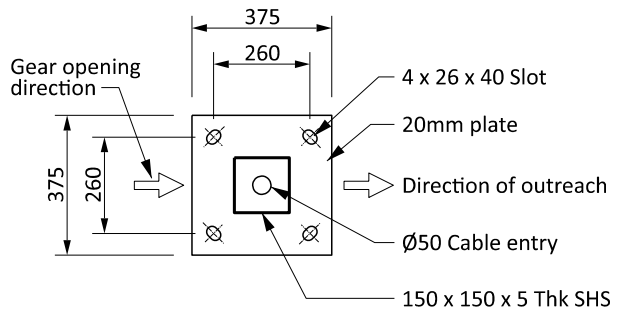
- Dimensional Verification
- Galvanising Thickness
- Material Thickness

#### QUALITY CONTROL PROCEDURES

The Supplier/Manufacturer and Galvaniser of the column shall be ISO 9001:2000 accredited

#### FINISHING

- Oven Baked Powder Coated
- High Performance Polyester UV Resistance (formulated for galvanised surface)
- Hot Dip Galvanised
- 2 Part Epoxy Coat (10 Years)



**BASE FLANGE DETAIL**