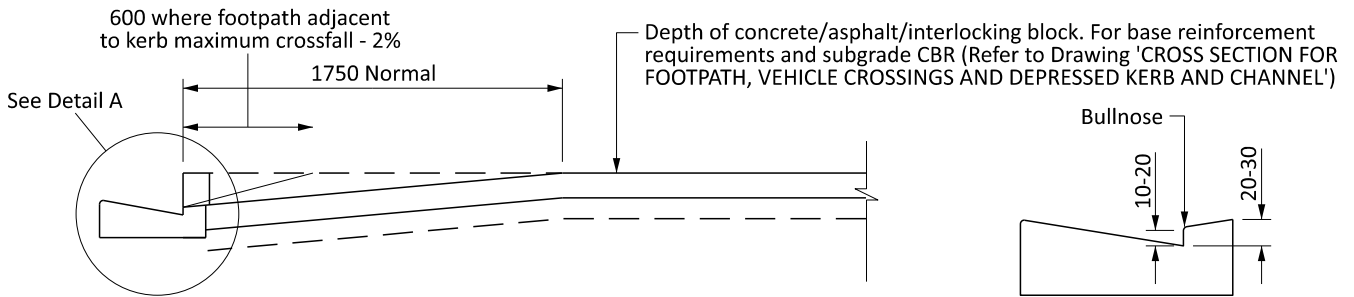
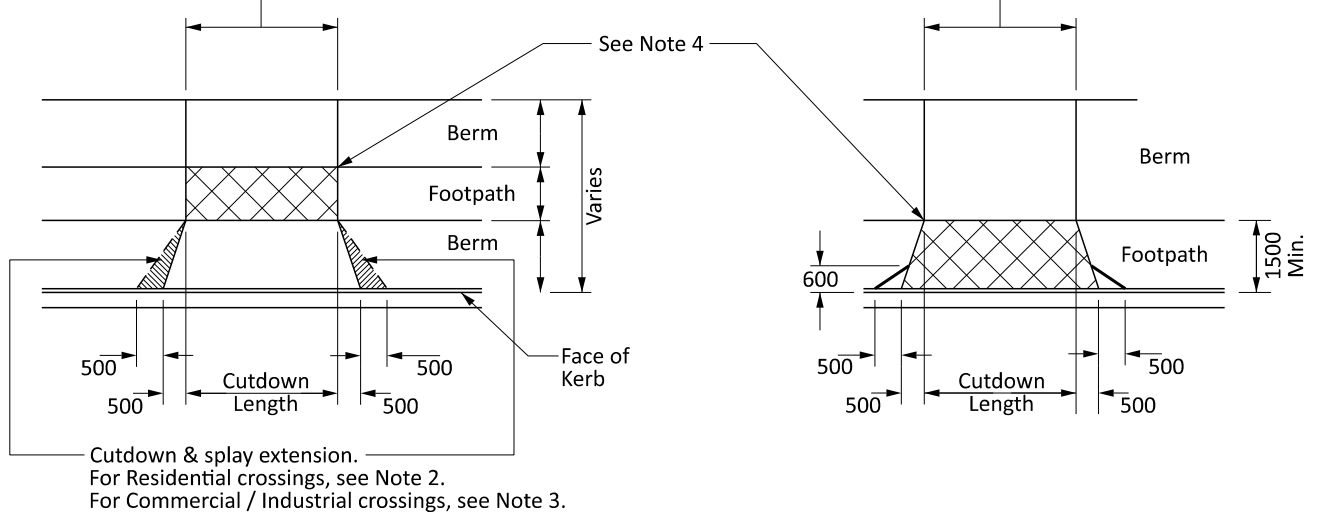


- Crossing Width
- 3000 min./5500 max. - Residential Vehicle Crossing
  - 5000 min./7500 max. - Commercial/Industrial Vehicle Crossing
  - 1800 min./2400 Des. - Pedestrian Cut Down

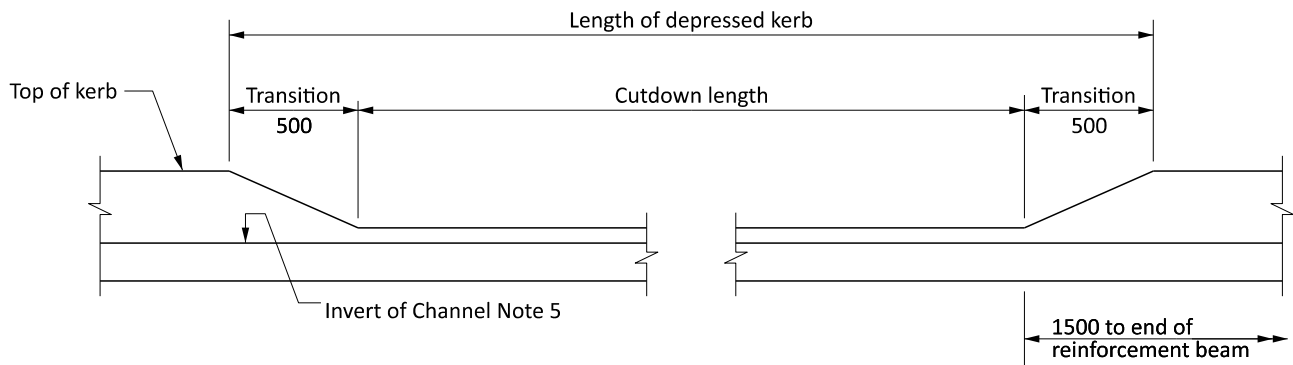
- Crossing Width
- 3000 min./5500 max. - Residential
  - 5000 min./7500 max. - Commercial/Industrial



**SECTION THROUGH VEHICLE CROSSING**

**DETAIL A - VEHICLE CUTDOWN KERB**

Refer to Note 5



**PROFILE OF DEPRESSED KERB**

**NOTES:**

1. When commercial and industrial crossings are constructed, the reinforcement beam is to extend 1500 either side of cutdown.
2. Cutdown and splay extension to be constructed where the carriageway width is less than 9000 and the crossing width is less than 4000.
3. This area is to be formed and surfaced to the Commercial/Industrial standard for all Commercial/Industrial vehicle crossings. This may be extended to where footpath commences.
4. The footpath within the crossing area shall removed and strengthened to match the vehicle crossing construction standard and then be surfaced with the same material as the footpath either side.
5. When crossing is a pedestrian cutdown use pedestrian / cycle cutdown shown in Drawing 'PEDESTRIAN FACILITIES IN ISLANDS'