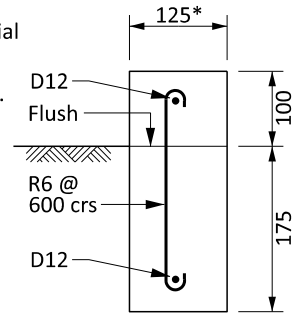
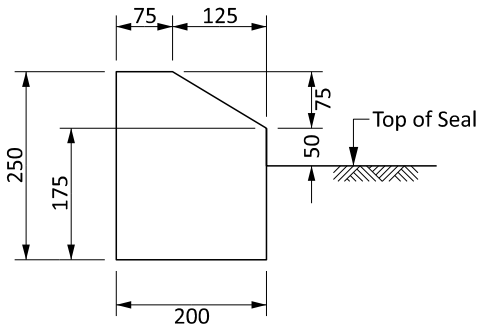


VERTICAL KERB & CHANNEL

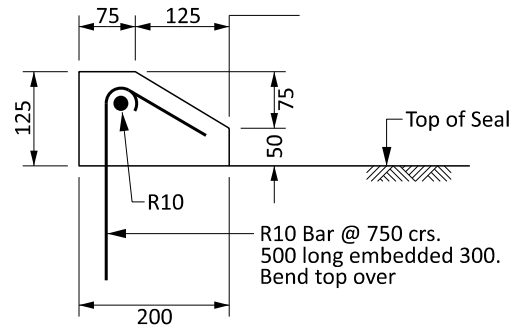
* In Industrial/Commercial uses increase these dimensions by 25mm and reinforce as shown.



EDGE RESTRAINT - (Parallel to Travel)

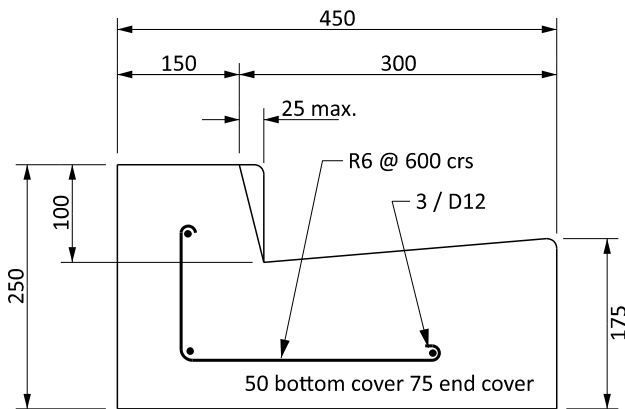


TYPE A - (Cast Insitu)



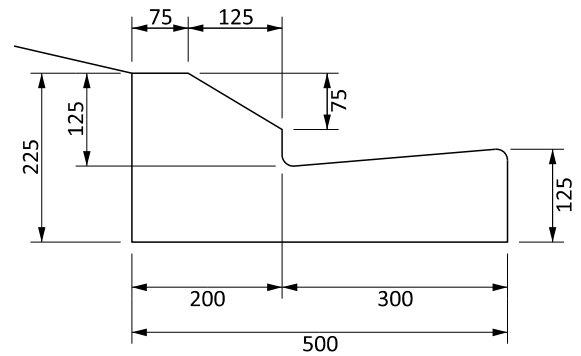
TYPE B - (Pinned to Pavement)

MEDIAN KERB

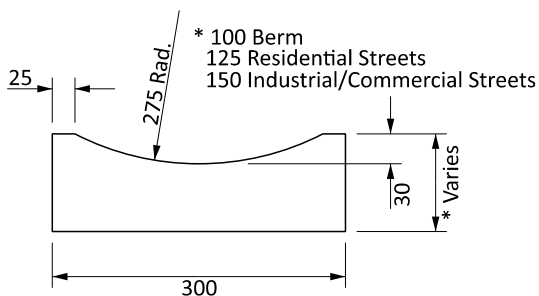


HEAVY DUTY KERB & CHANNEL

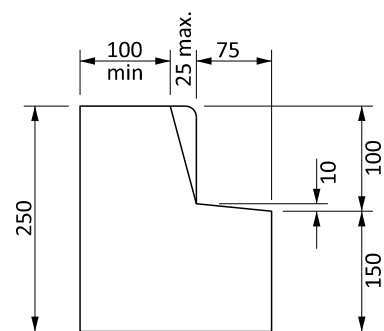
e.g. Tight Radius K & C usage Narrow Carriageway



MOUNTABLE KERB & CHANNEL



DISH CHANNEL



VERTICAL NIB KERB

NOTES:

1. All concrete shall be 20 MPa in place.
2. Minimum radius for kerbs on Public roads 5.0m.