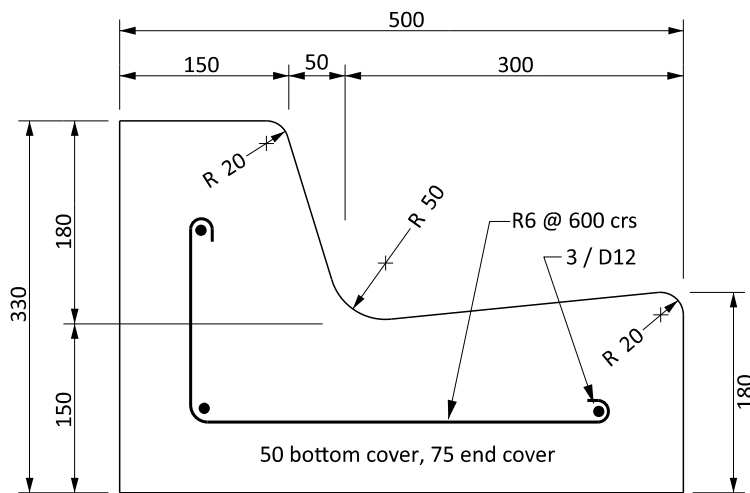


**ACCESSIBLE RAISED BUS STOPS
(BUS CAGE ROAD MARKED)**



**ACCESSIBLE BUS STOP
KERB DETAIL**



**ACCESSIBLE RAISED BUS STOPS IN RESIDENTIAL AREAS
(NO ROADMARKING)**

NOTES:

For placement of tactile paving Refer to Drawing 'TACTILE PAVING FOR VISION IMPAIRED'