



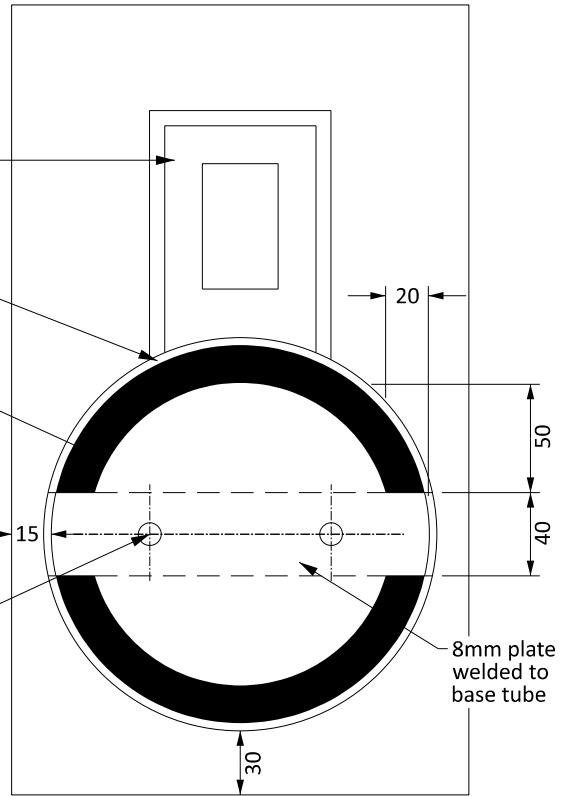
Plate welded to base tube
200 x 370mm

170 Ø ID 4mm thick base tube

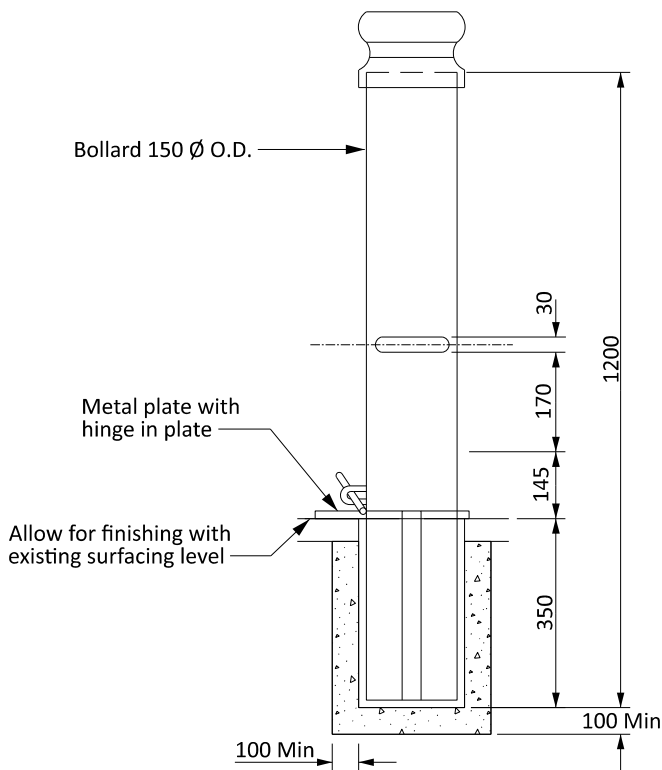
140 Ø OD x 8mm plate with holes for bollard to slot in

6 Ø countersunk hole

8mm plate welded to base tube



BASE TUBE PLAN

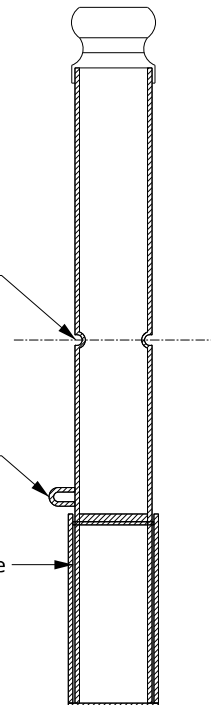


ELEVATION

Hand-hold slots cut into sides of bollard and half of 30mm Ø tube welded in hole to form a recess

Staple fabricated from 10mm plate welded 4 sides to tube

Base tube



SECTION A-A

NOTES:

1. All bollards are to be installed in footpath areas.
2. Base tubes are to be cast into concrete and the surrounding surface is to be reinstated as per existing.
3. The base tube and locking plate are to be flush with the existing surface.
4. All bollards are to have a 600mm clearance to the kerb face.
5. Bollard cap is made of spun aluminium (scaloped style shown)
6. Bollard caps are to be held in place with rivets.
7. Galvanised or Powder coating, colour to be specified.
8. Bollard is to be slotted 350mm from the bottom to allow it to sit in base tube.
9. A secondary base tube, located nearby, may be required to allow for safe storage of bollards when removed for extended period.