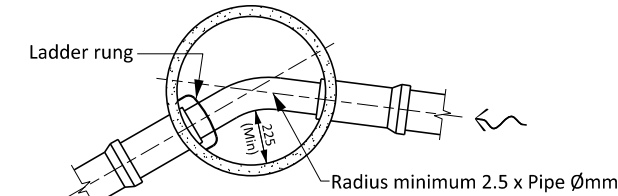
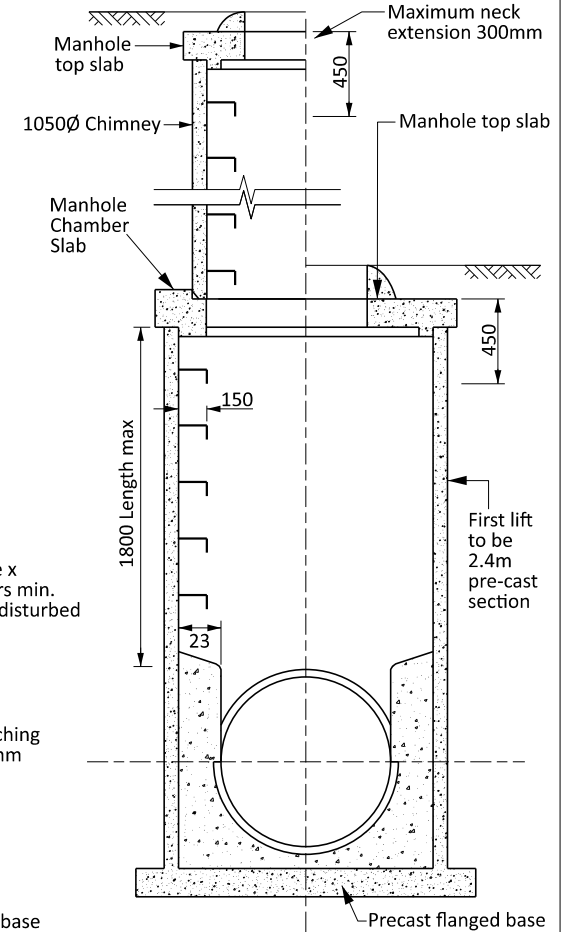


NOTES:

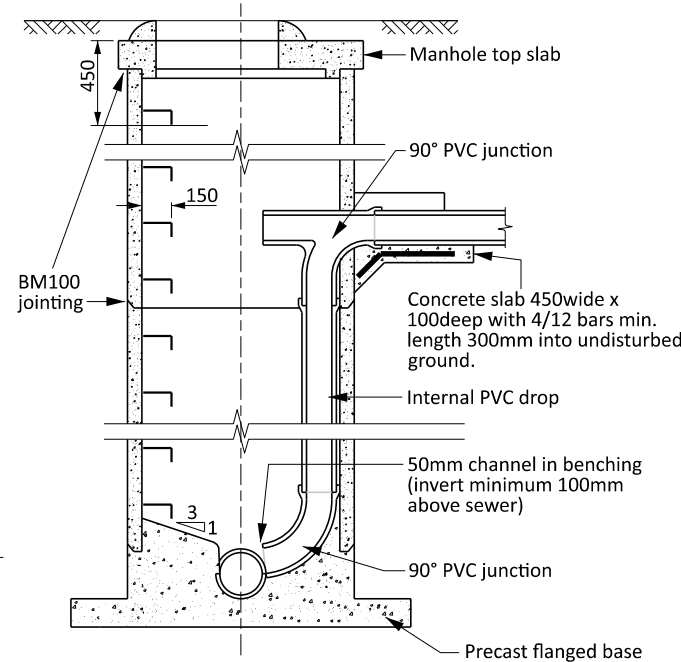
1. Diameters of precast manhole pipes are nominal only.
2. Wastewater manholes to use ceramic or accepted pre-formed channel by Hynds for channelling. Stormwater manholes may use concrete.
3. See standard detail for ductile iron lid with rim to fit recess and locking bolts and pre-cast slab detail.
4. Ground level tolerances: Pavement +0mm, -5mm
Berm +5mm, -5mm
Footpath +10mm, -0mm
5. Manhole lid and frame to follow ground slope.



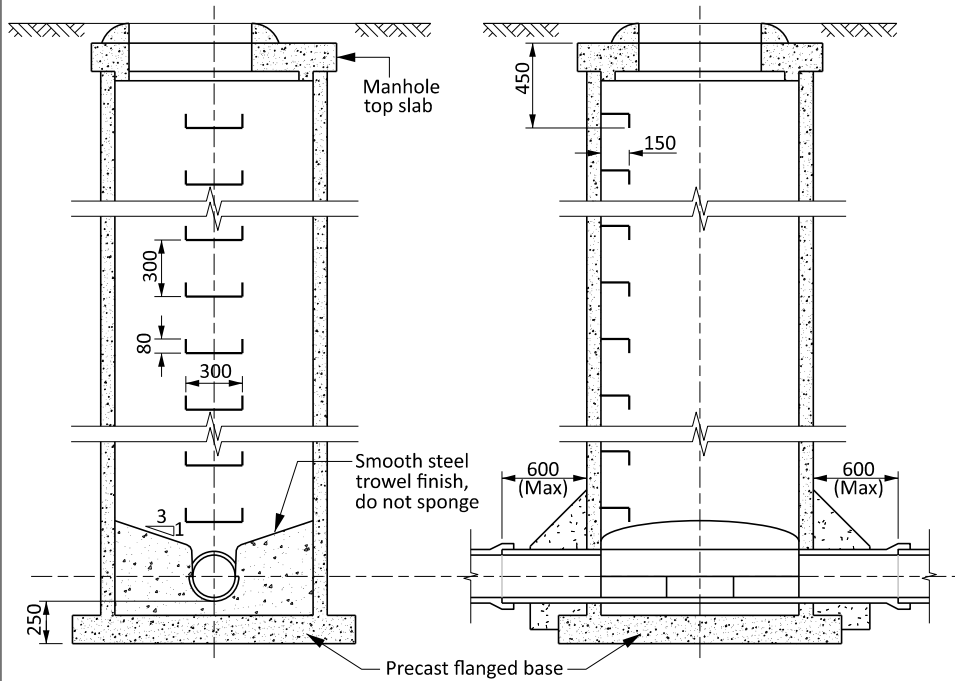
TYPICAL PLAN CURVE THROUGH MANHOLE



DETAILS DN1350 AND OVER MANHOLES



DROP MANHOLES



DETAILS DN1050 & DN1200 MANHOLES