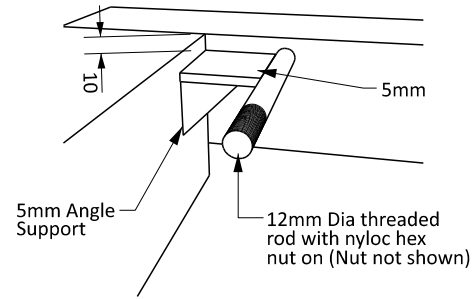


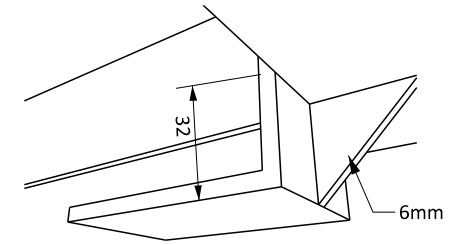
100 x 100 x 6mm center box section of Lid Frame (Refer Drawing 'WASTEWATER PUMP STATION LID FRAME')

External frame dimensions setout in Drawings 'WASTEWATER PUMP STATION UPPER SECTION REINFORCING', 'WASTEWATER PUMP STATION LID FRAME', 'WASTEWATER PUMP STATION LID FRAME DETAILS 1 & 2', 'WASTEWATER PUMP STATION LID FRAME DETAILS 4 & 5' and 'WASTEWATER PUMP STATION LID DETAILS'

3D CONCEPT



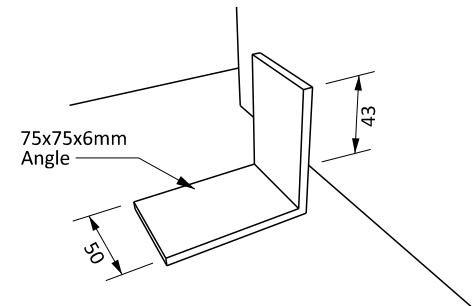
DETAIL A



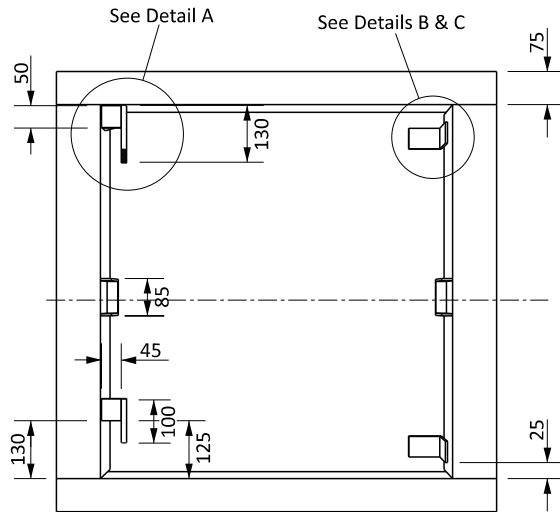
DETAIL B - LOWER VIEW

NOTE:

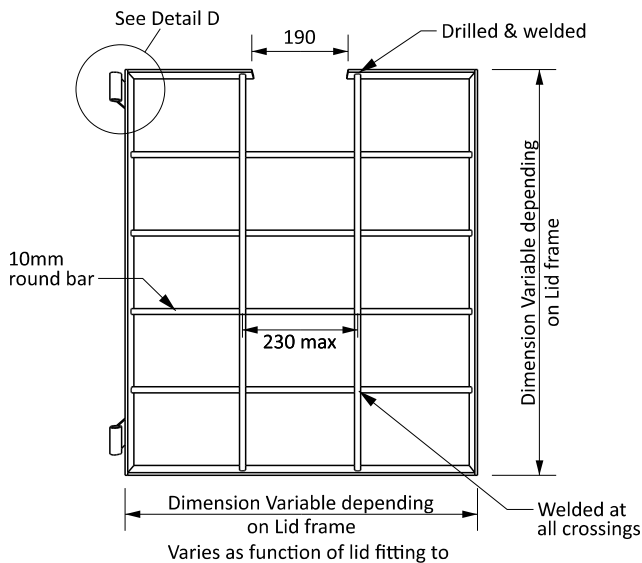
1. Secondary lid to be constructed from 316 stainless steel.



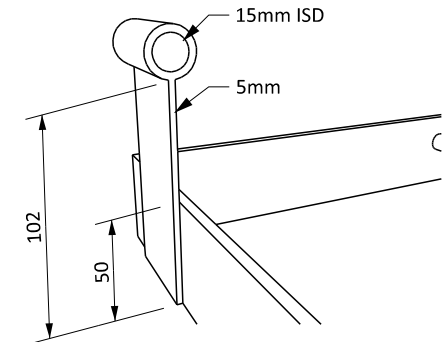
DETAIL C - UPPER VIEW



PLAN - SURROUND



PLAN - SECONDARY LID



DETAIL D