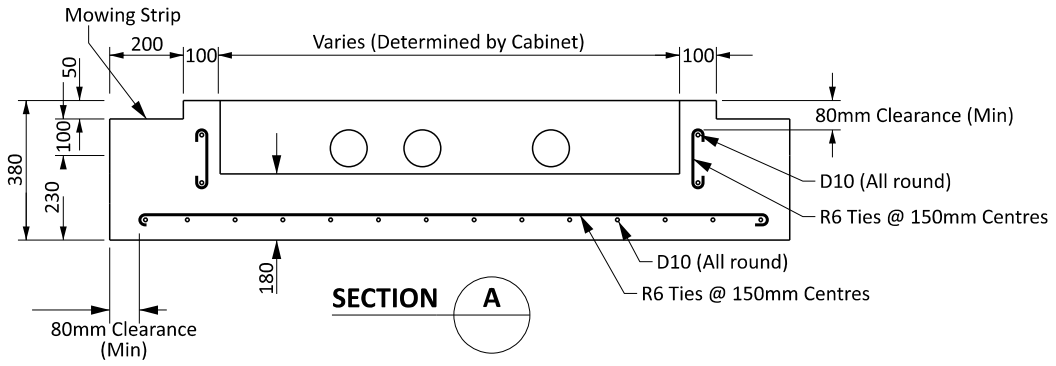
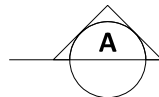
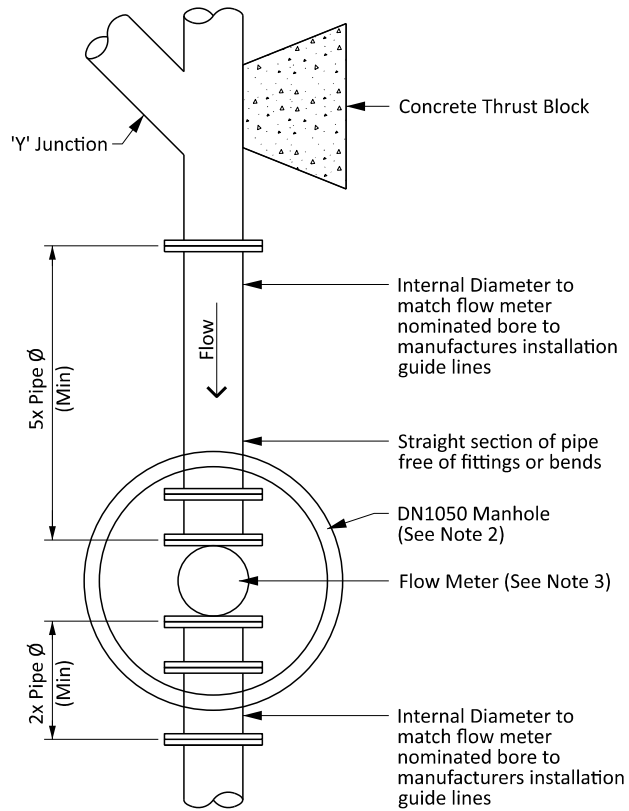


**PLAN**

- CABLE DUCTS**
- ① 100mmØ PVC Duct - Pump Power
  - ② 100mmØ PVC Duct - Floats/Level Sensors
  - ③ 50mmØ PVC Duct - Solenoid Valves (If any sparges installed)
  - ④ 50mmØ PVC Duct - Overflow Float (If remotely installed)
  - ⑤ 50mmØ PVC Duct - Flow Meter
  - ⑥ 100mmØ PVC Duct - Power Inlet



**CONCRETE CONTROL CABINET PLINTH**  
(Concrete Strength 35 MPa @ 28 days)



**FLOW METER INSTALLATION DETAILS**

- NOTES:**
1. Plinth to be designed to meet soil conditions.
  2. Flow Meter in DN1050 Manhole with standard manhole lid/frame. Meter is to be 400mm off the manhole floor.
  3. Meter must be able to be removed within the chamber through the use of joints (other than flange/flange).



**CONTROL CABINET PLINTH & SPS FLOW METER**