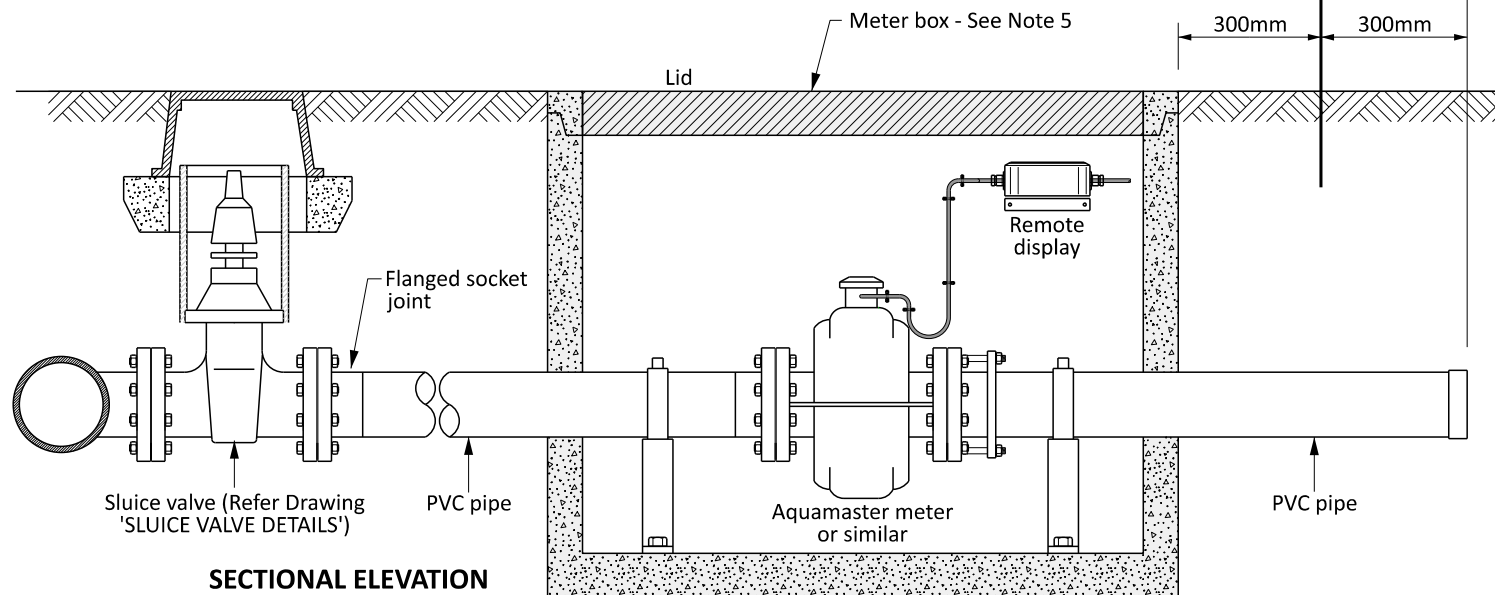


PLAN VIEW
(DN100 Connection shown)



SECTIONAL ELEVATION
(DN100 Connection shown)

NOTES:

1. Upstream and downstream spacing in accordance with manufacturer's specification or otherwise minimum 5 times pipe diameter.
2. Isolation washers and gaskets to be used between components of dissimilar metals.
3. Protective membrane to be wrapped around pipe where it passes through chamber wall (2.5mm polythene)
4. Display to be remote mounted with stainless brackets.
5. Meter box sized to contain all fittings.
6. Any backflow requirements necessary to comply with the NZ Building Code G12 shall be installed within the Lot, to be owned and maintained by the property owner.

NOT TO SCALE